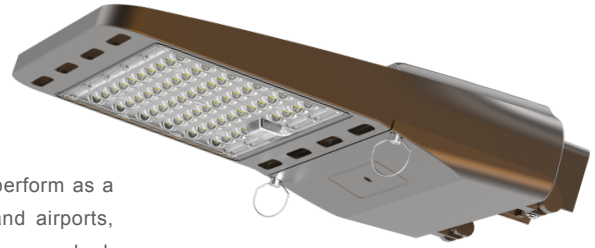


STAR

Area Lighting | Parking | SHOE

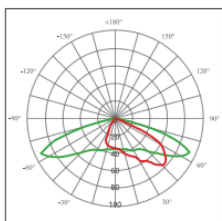


Star LED's SHOE is a classic area light with the unique versatility to perform as a flood light. Perfect for small roadways, back streets, parking areas and airports, SHOE has been designed to handle harsh environments. It has a sleek appearance, high efficacy (170lm/W), is available in several wattages, mounting options and beam angles. It really is the ideal area light option! The ANSI compliant receptacle (included as standard) allows you to customize and future proof your investment at a later date, to your specifications. All this backed by our industry leading 10yr warranty, it's quality you can trust!

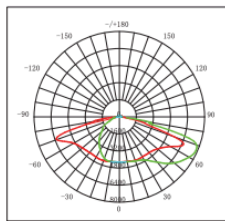
Model Guide SF-BR]		[Example Model: SHOE-100W-4K-T5M-100-277V-ND-SF-BR]						
Series	Wattage	CCT	Distribution	Voltage	Sensor	Mount	Features	Finish
SHOE	60W 10200lm	3K 3000K	T3 (asymmetrical)	100-277V AC 50/60Hz (standard)	ND Non Dimmable (standard)	SF Slip fitter (standard)	10KV Surge Protection Device (optional)	BR Bronze
	80W 13600lm	4K 4000K	T4M medium (symmetrical)	240-480V AC 50/60Hz (optional - high voltage)	DIM Dimmable 0-10V (optional)	Y Yoke 'U' (optional)		O Other / Custom (optional)*
	100W 17000lm	5K 5000K	T5M medium (symmetrical)		MIC Microwave sensor (optional)	AM Arm mount (optional)		
	150W 25500lm	5.7K 5700K	FLOOD 90°x120° (symmetrical)		PC Photocell dusk to dawn (optional)	TR Trunnion (wall, optional)		
	185W 31450lm							
	240W 40800lm							
	300W 51000lm							
	400W 68000lm							
	500W 85000lm							*minimum order quantities may apply for the option

Photometric Distribution Options

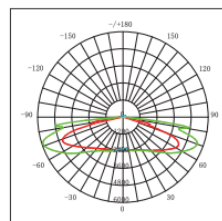
SHOEs standard lumen distributions are as per diagrams below. Photometric reports tailored to your specification and project, demonstrating suitable distributions and total lumen requirements are available, contact us for more information.



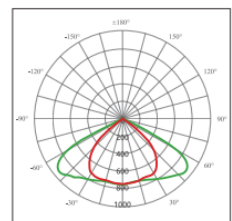
Type3-S



Type4-M



Type5-M



90x120

PRODUCT FEATURES

- Proprietary optical control (beam and field angle) engineering to allow for uniformity across flood, minor roadway and parking lights with versatility of area and flood options.
- Efficacy of 170lm/W ensuring maximum output of light while performing extremely efficiently
- Modular design and access door allows for ease of serviceability. Secured by a hinge, the door enables the installer to be 'hands free' while making integral connections.
- Integrated heatsink with dynamic fin design provides thermal protection and efficient heat dissipation, extending the life of the LED's.
- ANSI complaint receptacle allows for additional technology and further efficiency when combined with photocells and microwave sensors

LUMINAIRE DIMENSIONS

60W-185W	240W-300W	400W-500W
428mm x 304mm x 88mm 16.85" x 11.97" x 3.46"	595mm x 304mm x 92mm 23.43" x 11.97" x 3.62"	768mm x 340mm x 105mm 30.24" x 13.39" x 4.13"

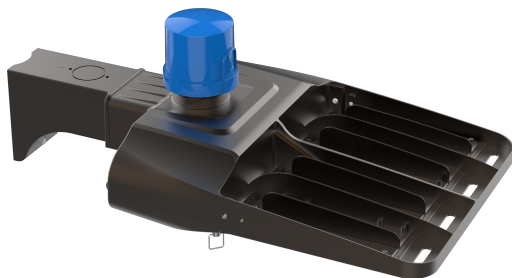
MOUNTING OPTIONS



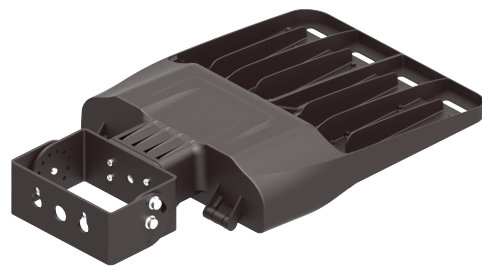
SLIP FITTER



YOKE



ARM MOUNT



TRUNNION

Specifications**Assembly**

Outer body composed of heavy duty die cast aluminium alloy (EN AC-46100), treated with anti-UV thermosetting polyester powder-coat and 80 micron epoxy primer for extremely corrosive environments. Standard color bronze, custom painting available upon request (minimum order quantity may apply). Standard mounting, Slip Fitter with +/- 180° adjustment (tenon adaptors and mounting options can be specified to suit your project upon request). Easy access service door, released with pins and secured with hinge for 'hands free' servicing and installation. Serviceable, modular LED design for ease of replacement if necessary. Complete with integrated heat sink and proprietary fin design; factory label with description of model; QR accessible service tag. Ingress rated to IP66, suitable for wet locations and exposure to elements, operating temperature -40°C to 55°C (-40°F to 131°F).

Photometric Data

Light source Philips LUMILEDS, individually enclosed in PC (polycarbonate) treated for UV stabilisation. Efficacy of 170lm/W with luminous flux range (depending on selected specifications) 10200lm - 85000lm total. CCT 3000K, 4000K, 5000K, 5700K and color rendering index (CRI) 80Ra (standard). Beam angles Type 3, Type 4 Medium, Type 5 Medium, 90°x120°.

Electrical Data

Wattages available 60W-500W. Input voltage 100-277V AC 50/60Hz or optional 240-480V AC 50/60Hz. Power factor >.95. Control options include 0-10V dimmable, motion (microwave) sensor, photocell (dusk to dawn), DALI dimming available upon request. High powered SOSEN LED driver, 10kV surge protection (optional). All electrical components are RoHS compliant to meet US standards.

Certifications & Compliance

Tested and compliant for LM80 lifespan of 500,000h at average temp of 25°C. Certified UL / cUL, CE, RoHS.

Servicing & 10yr Limited Warranty

Luminaires come with QR identifiable service label fixed to the back of the luminaire housing, allowing access to installation guides, product information and warranty contact. Warranty claims can be made by using the link on the service tag or, by contacting Star LED on +1 423 460 4050, or by emailing info@StarLED.green. For complete 10yr Limited Warranty document, contact us or refer to your original purchase document.

Features

For full list of available features and suitability to your project, please contact your local Sales Representative. Additional features may be available depending on region and market and should be assessed for suitability to the application.

Star LED (HQ)

241 Industrial Park Rd
Mountain City, TN 37683
P +1.423.460.4050
E info@StarLED.green
W www.StarLED.green

T&Cs

All rights reserved 2022 Star LED. Any and all information included in this document may be subject to change at anytime without notice. Star LED does not provide any representation or warranty as to the accuracy or completeness of the information included herein and shall not be held liable for any actions in reliance thereon. This document is not intended as a contract unless indicated and agreed by Star LED.